

# **NOTICE OF PUBLIC MEETING**

## **PUENTE Charter School**

The Board of Directors of PUENTE Learning Center will be conducting a public meeting on:

**Wednesday, June 16, 2021  
8:30 a.m.**

**PUENTE Learning Center  
501 S. Boyle Avenue  
Los Angeles, CA 90033**

Any person who wishes to address the Board of Directors is welcomed to attend.  
No prior notification of your attendance is necessary.

If you require accommodations in order to attend this meeting can call Jerome Greening at 323.780.0076 or email at [jerome@puente.org](mailto:jerome@puente.org). for assistance

It is hereby noted that the agenda for this meeting of the PUENTE Governing Board has been posted at the following location(s):

- [www.puente.org](http://www.puente.org)
- 501 S. Boyle Ave., Los Angeles, CA 90033
- 125. N. Marengo Ave. Suite 202 Pasadena, Ca 90017
- 5228 Whittier Blvd. Whittier, Ca 90031
- 3645 Long Beach Blvd. Long Beach Ca 90807
- 6098 Rickenbacker Rd. Commerce, Ca 90040
- 777 S. Figueroa St Suite 4550. Los Angeles, Ca 91101
- 3525 Via San Delarro Montebello, Ca 90640
- 277 Green St. #406 Pasadena, Ca 91105



# PUENTE Learning Center

## PUENTE Charter School Board of Directors Meeting Agenda

Wednesday, June 16, 2021

8:30am

501 S. Boyle Avenue, Los Angeles, CA 90033

Zoom Meeting (Due to COVID-19)

<https://us04web.zoom.us/j/79067197775?pwd=bzNmazJ3K09IRndaa3BPYzNXtTz6QT09>

Meeting Id: 790 6719 7775

Password: LR03Kg

Notice is hereby given that the PUENTE Learning Center Board of Directors of PUENTE Charter School will hold a public meeting at the above-referenced time and Zoom link. The purpose of the meeting is to discuss and take action on the following agenda. The agenda shall provide an opportunity for members of the public to address the board directly at each location. (GOV CODE: 54954.3).

If you require special accommodations in order to attend this meeting, please call Jerome Greening at (626) 260 – 0070 or e-mail at [jerome@puente.org](mailto:jerome@puente.org).

Agendas for all regular board meetings are posted at least 72 hours prior to the meeting, and agendas for all special board meetings are posted at least 24 hours prior to the meeting at the entrances of the PUENTE facility and on the Parent Board at PUENTE Charter School, teleconference locations, and on [www.puente.org](http://www.puente.org). (GOV CODE: 54954.2. 54956)

Agenda Item	Proposed Action	Attachments	Who
1. Call to Order and Roll Call to Establish Quorum	Roll Call	Board Roster	Board Chair, Chun Wong
2. Minutes – March 3, 2021	Approval	Minutes	
3. Public Comment Members of the public are welcome to address the PUENTE Charter School Board directly at a regular meeting to address any item of interest, or on the agenda and at a special meeting to address any item on the agenda, before or during the consideration of the item. Comments will be limited to three minutes. (GOV CODE: 54954.3) No action shall be taken on any item not appearing on the agenda unless the action is otherwise authorized by subdivision (b) of GOV CODE Section 54954.2.			
4. Operations & Programs			
i. <b>LAUSD Oversight Report for 2020-21</b> LAUSD Charter Schools Division monitors each charter school in accordance with applicable laws, regulations, LAUSD policy, memoranda of understanding, and the school’s operative charter. Information gathered through oversight serves as part of the charter school’s ongoing record for the District to make informed decisions about charter school authorization, renewal, material revisions, sharing of promising practices, and if need be, revocation.	Review	Report	Charter School Advisory Member; Oscar Cabrales; Interim Principal; Brenda Meza CEO; Jerome Greening
Consent Calendar Items for Approval			
ii. <b>Instructional Calendar for Upcoming 2021-2020 Academic Year</b> PUENTE will offer 180 day instructional calendar	Approval	Calendar	
iii. <b>EPA Funding</b> Spending plan to allocate these funds to supportteacher salaries and benefits. This funding is approximately 17% of the LCFF base rate	Approval	Regulatory Percentage of 17% of Revenue	

iv. <b>Parent/ Student Handbook 2021-22</b> The PUENTE Parent Handbook is an important resource for school communication on policies and procedures and serves as an ongoing reference.	Approval	Parent/Handbook for 2021-2022	
v. <b>Instructional Materials Aligned to Common Core Standards</b> The Classroom Textbook, Digital & Assessment Resources for 2021-22	Approval	Renewal Contract	
vi. <b>Comprehensive Therapy Associates Special Education Contract Renewal</b> Comprehensive Therapy Associates Contract for as-needed special education services for student achievement for 2021-22	Approval	Renewal Contract	
vii. <b>School Nutrition Plus Meal Service Contract Renewal</b> School Nutrition Plus contract for meal service consisting of breakfast, lunch and snack for 2021-22	Approval	Renewal Contract	
viii. <b>Think Together After School Services Contract Renewal</b> Think Together Contract for After School services for 2021-2022	Approval	Renewal Contract	
5. Finance Report			
i. Charter Financials as of March 31, 2021	Informational	Financial Statements	Finance Committee Member, Chun Wong; Finance Committee Member, Jocelyn Rosenwald; VP of Finance/Administration, Angelica Castro; CEO, Jerome Greening
ii. Charter Interim Financials			
iii. Proposed Budget for FY22	Approval	FY 22 Proposed Budget	
iv. Local Control Accountability (LCAP) 21-22; including Annual Update & LCFF Budget Overview for Parents Budget allocation for school goals and outcomes	Approval	LCAP FY22; Including Annual Update & LCFF Budget Overview for Parents	
6. Adjournment			Board Chair, Chun Wong
Certification of Posting I, Jerome Greening, hereby certify that this agenda was posted on 6/11/2021 at 5 pm at: - PUENTE Learning Center website: <i>www.puente.org</i> - PUENTE Learning Center 501 S. Boyle Ave. Los Angeles, CA 90033			



PUENTE Charter School  
501 S. Boyle Avenue, Los Angeles, CA 90033

**BOARD MEETING MINUTES**

**March 3, 2021 8:30 am**

**Join Zoom Meeting**

**<https://us04web.zoom.us/j/79661381746?pwd=TVRPbllyblFKeWJzNURJbHpWTGxYdz09>**

**Meeting ID: 796 6138 1746 Passcode: 6J3cvu**

The PUENTE Charter School board meeting was conducted via Zoom due to COVID-19 on Wednesday, March 3, 2021 at 8:30 am. Board members and staff attended the meetings from their place of residence or workplace.

**Board Members in Attendance:** Chun Wong, Tyler M.P. Sutherland, Jocelyn Rosenwald, Oscar Cabrales, Greg Gonzalez, Albert Reyes, Lara Lightbody

Board Members not in Attendance: Daniel Arguello

**PUENTE Staff in Attendance:** Jerome Greening, Brenda Meza, Angelica Castro, Matt Wells, Michele Wolfe, Anton Qataifi, Alicia Granados

**Call to Order**

Chun Wong called the meeting to order at 8:36 am. A quorum was established.

**Roll Call**

Board Chair Chun Wong conducted a roll call for Board Members. Present were: Chair, Chun Wong; Tyler M.P. Sutherland, Oscar Cabrales, Greg Gonzalez, Jocelyn Rosenwald and Albert Reyes, Lara Lightbody.

**Approval of Board Meeting Minutes from December 2, 2020**

Motion: A motion was duly made by Chun Wong and seconded by Tyler Sutherland to approve the December 2, 2020 minutes. Board moved to accept the minutes as written. *Wong, "yes"; Sutherland, "yes"; "; Rosenwald, "yes"; Cabrales, "yes"; Gonzalez, "yes"; Reyes, "yes"; Lightbody, "yes"*



### **Approval of Board Meeting Minutes from December 11, 2020 (Audit Approval)**

Motion: A motion was duly made by Albert Reyes and seconded by Oscar Cabrales to approve the December 11, 2020 minutes. Board moved to accept the minutes as written. *Wong, "yes"; Sutherland, "yes"; "; Rosenwald, "yes"; Cabrales, "yes"; Gonzalez, "yes"; Reyes, "yes"; Lightbody, "yes"*

### **Public Comment**

Chun invited anyone present who wished to make public comments to do so. There were none.

### **Re- Entry Plan 2021**

Interim Principal Brenda Meza provided updates on the Return-to-School Plan for hybrid/small groups. Brenda provided details on the hybrid model and the health and safety procedures and protocols that are being implemented for all students including, physical distancing policies, prescreenings, sanitation, and operational logistics. An overview of all the policies, drafted in consultation with regulatory entities, was presented and discussed.

### **LAUSD Oversight Visit**

Interim Principal Brenda Meza provided information on the upcoming LAUSD Oversight Visit scheduled for March 8<sup>th</sup> and March 9<sup>th</sup> 2021. Brenda noted that last academic year LAUSD awarded PUENTE "4" in each evaluation area (the highest awarded) and that this year the goal is to secure the same scores. Brenda made note of the robust instruction occurring in distance learning by the instructional team and the effective home-to-school relationship with the families. There is an abundance of favorable evidence to share with LAUSD.

### **Data Dashboard**

Interim Principal Brenda Meza presented the assessments being utilized to ensure student progress monitoring including the ELPAC; NWEA Map; Running Records; Benchmark Assessments; Book Club (the extension for gifted students) and the upcoming SBAC for our third grade students. Brenda highlighted that for mid-academic year, 46% of PUENTE students were at Proficient or Advanced (in grade-level mastery) for English Language Arts. 54 % of PUENTE students had achieved Proficient or Advanced (in grade-level mastery) for Math. We are looking to support each student to high achievement by the conclusion of the academic year.

### **Capacity Building Update**

Interim Principal Brenda Meza discussed the current capacity building updates for the Charter school including Return to School Planning (for current year & next year), Preparing the Budget for 2021-2022, Instructor Grade-Level Assignment (using metrics), Hiring Additional Staff, Curriculum Resources, including technology (laptops, software), Updating Policies and Procedures & Calendar.

### **Approval – Suicide Prevention Policy**

PUENTE Charter School recognizes that youth suicide is a serious problem across the state of California.



These policies and procedures outline PUENTE Charter School's approach to youth suicide prevention and intervention. This policy shall be available to all staff and reviewed and updated each school year.

Motion: A motion was duly made by Oscar Cabrales and seconded by Tyler Sutherland to approve Suicide Prevention Policy. *Wong, "yes"; Sutherland, "yes"; "; Rosenwald, "yes"; Cabrales, "yes"; Gonzalez, "yes"; Reyes, "yes"; Lightbody, "yes"*

### **Financial Report:**

#### **Charter Financials as of December 31, 2020**

##### Statement of Activities Analysis:

As of December 31, 2020, the Charter School YTD revenue was \$1,261,292 and incurred expenses of \$1,165,180. Resulting in a change in net assets or surplus of \$96,112. As of December 31, 2020, total operating revenue exceeded YTD budgeted amount by \$89,991. This is mainly due to unbudgeted Other Federal Income funds received from the State of California for COVID-19 Loss Mitigation Learning Funds. Following is a list of Charter School revenue allocation:

- Personnel cost: With a total of \$817,236 or approximately 70% of total expenses, personnel cost reflect our growing school status. According to Charity Navigator, in order for schools to effectively serve students, the benchmark percentage for personnel cost (mainly instructional) should not be less than 55%. As such, our allocation is above the suggested percentage benchmark.
- The Charter School is fiscally responsible for a partial payment of expense associated with Special Education Programs that the School District is responsible for and pays for out of its General Fund. Special Ed Fair Share and Special Ed Contract were \$51,611 or 4.4% and \$36,132 or 3% of total expenses.
- When examining our expenditures, we found that PUENTE, at best, will have some small savings on our total operating budget relative to planned expenditures on certain areas of services.
  - o Possible areas of savings:
    - Contracts
    - Food Service Contract
    - Textbooks
    - Furniture & Equipment
    - Security

At the same time, costs in the areas of technology and virtual learning are expected to increase.



### Statement of Financial Position

The Statement of Financial Position helps us determine to assess the Charter School financial stability and potential risk. To assess we calculate the Cash and the Quick Ratio. These ratios measure the liquidity and Charter's ability to pay off short term liabilities.

- **Cash Ratio:** Compares the amount of cash and cash equivalent of \$430,307 against current liabilities of \$78,090 resulting in 5.51. Please note that the liability are payments due to PUENTE Learning Center and not outside vendors. This means that for every \$1 of liability, the Charter School has \$5.51 of liquid cash.
- **Quick Ratio:** Compares the amount of cash and cash equivalent of \$430,307 and accounts receivable of \$434,248 totaling \$864,555 against current liabilities of \$78,090 resulting in 17.18. This means that the Charter School has capacity to pay off its current liabilities with the current assets and can easily fund its day-to-day operations. Here for every \$1 of current liability, the Charter School has \$17.18 of quick assets to pay for it.
- **Months of Cash on Hand:** Represents the number of months of operating expenses that the Charter can pay with its current cash available. According to our Statement of Activities total operating expenses were \$1,165,180. As such, the average monthly expense or burn rate is \$194,197. Our total cash and cash equivalent is \$430,307 when divided by the burn rate of \$194,197 we get 2.2 months of cash on hand.

### Statement of Cash Flow

The Charter School's cash decreased by \$311,468. The decrease was mainly due to the following:

- a. As a non-cash item, change in depreciation of \$5,126 is subtracted to the net surplus to reconcile the cash from operations.
- b. Accounts receivable increased by \$211,399. Increasing receivables means less inflow of cash through decrease in collections. Therefore, the \$211,399 is subtracted from the net surplus.
- c. Contributions receivable decreased by \$14,540. Decreasing receivables means more cash through the increase in collections. Therefore, the \$14,540 is added to the net surplus.
- d. Due to Learning Center accrual decreased by \$132,840. Decreasing liabilities means that obligations are paid sooner rather than later. As such, the Charter School has less cash on hand as the \$132,840 is subtracted from the net surplus.



- e. Land Building & Equipment increased by \$83,007. This was mainly due to the payments related to the purchase of laptops and hotspots for our students without reliable internet access and/or technology to participate in digital learning. The increase resulted in a decrease in cash. As such, the change is subtracted from the total change in net assets.
- f. The total decrease in cash of \$311,468 is subtracted from the beginning cash of \$741,774 resulting in ending cash balance of \$430,307

**Approval – FY21 Audit Engagement Letter**

Angelica Castro, Chun Wong and Jocelyn Rosenwald presented the FY21 Audit Engagement Letter from the review. The report and management letter communicates a clean audit and the auditing firm of Magninnis, Knechtel and McIntyre.

Motion: A motion was duly made by Chun Wong and seconded by Jocelyn Rosenwald to approve the FY21 Audit Engagement Letter. *Wong, "yes"; Sutherland, "yes"; "; Rosenwald, "yes"; Cabrales, "yes"; Gonzalez, "yes"; Reyes, "yes"; Lightbody, "yes"*

**Adjournment of Meeting**

Chun Wong thanked everyone for their participation and adjourned the meeting at 9:11 am.

Submitted Respectfully,  
Alicia Granados





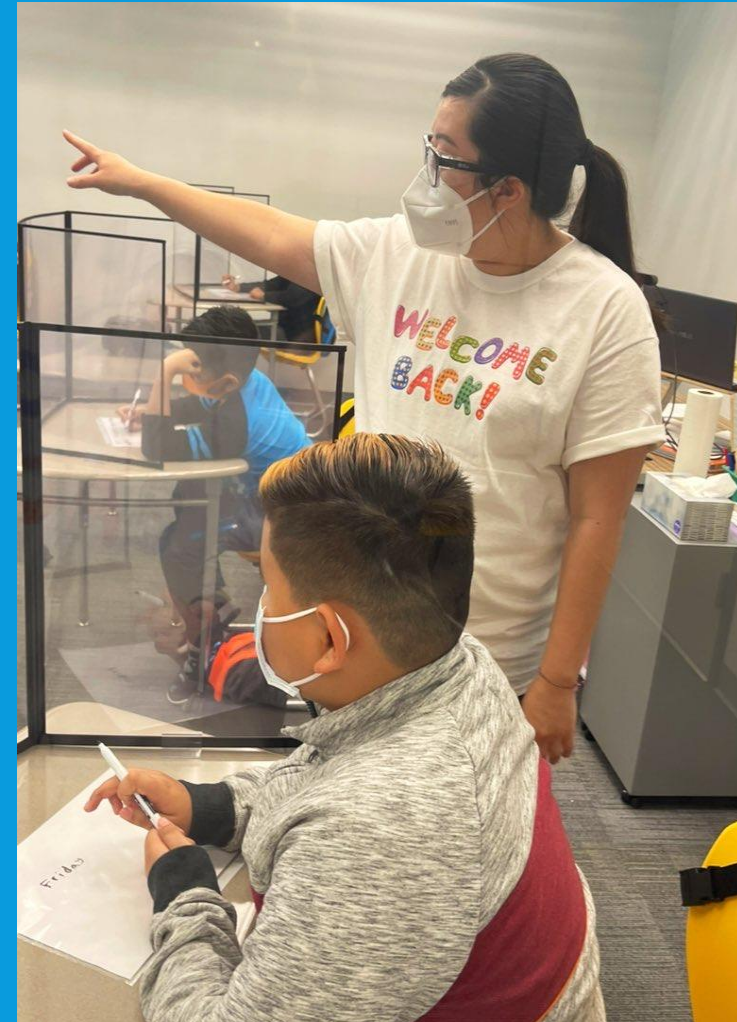
# **BOARD MEETING WEDNESDAY, JUNE 16, 2021**



## Update on In-Person Instruction (Hybrid)

*On Monday, April 12 PUENTE Charter School transitioned to hybrid for the entire school community:*

- Update on In-Person Operations





## LAUSD Oversight Visit Report 2020-2021



LAUSD CHARTER SCHOOLS DIVISION

SCHOOL NAME: PUENTE CHARTER

Annual Performance-Based Oversight Visit Report

DATE OF VISIT: 3/9/2021

Is school located on a District facility? If so, please indicate the applicable program (e.g. Prop 39, PSC, conversion, etc.):

Date of Co-Location meeting with Operations Team:

N/A

### SUMMARY OF RATINGS

*(4)=Accomplished (3)=Proficient (2)=Developing (1)=Unsatisfactory*

Governance	Student Achievement and Educational Performance	Organizational Management, Programs, and Operations	Fiscal Operations
4	No Rating	4	4

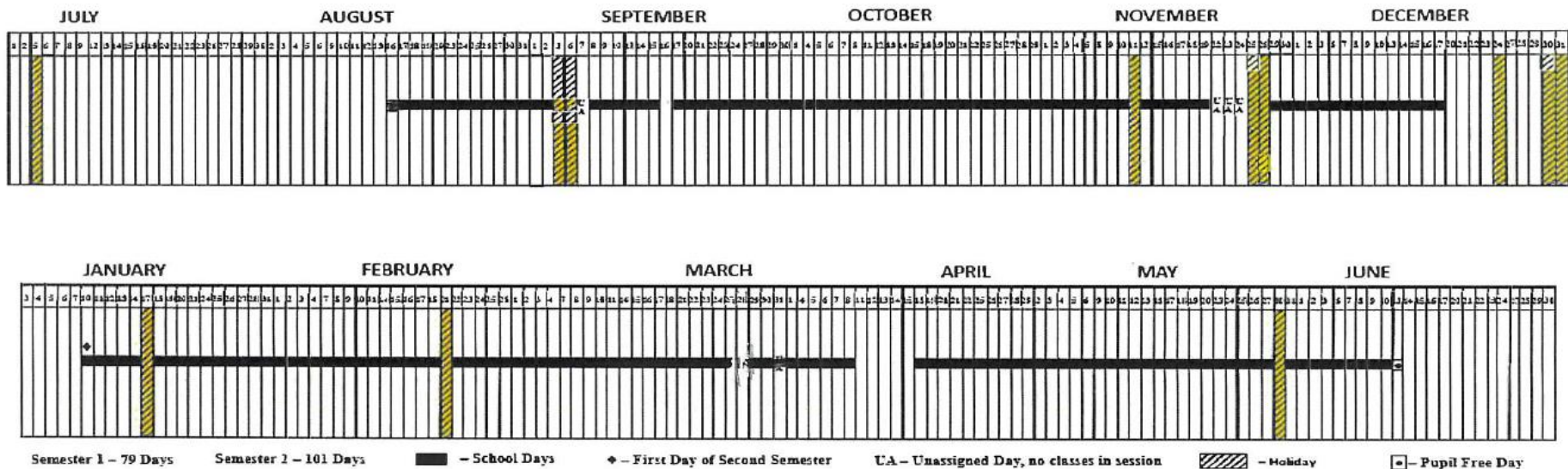




# 2021-2022 Academic Year Begins Monday, August 16 and Concludes on June 10 (180 Days)



## PUENTE Charter School LOS ANGELES UNIFIED SCHOOL DISTRICT SINGLE TRACK INSTRUCTIONAL SCHOOL CALENDAR 2021-2022



### IMPORTANT DATES:

07-05-2021	Independence Day	11-25 & 11-26-21	Thanksgiving Holiday	03-28-2022	Cesar E. Chavez
08-16-2021	First Day of Instruction	12-20-2021 thru 01-07-2022	Winter Recess		Birthday Observed
09-03-2021	Admission Day	♦ 01-10-2022	Second Semester Begins	04-11 thru 04-15-2022	Spring Recess
09-06-2021	Labor Day	01-17-2022	Dr. Martin L. King, Jr.'s Birthday	05-30-2022	Memorial Day
11-11-2021	Veterans Day	02-21-2022	Presidents' Day	* 06-10-2022	Last Day of Instruction



Academic Year 2021-2022  
Calendar  
For Approval

- INSTRUCTIONAL CALENDAR FOR 2021-2022 WILL FOLLOW THE LAUSD BOARD-APPROVED CALENDAR FOR DISTRICT SCHOOLS. SCHOOL BEGINS AUGUST 16, 2021 AND CONCLUDES JUNE 10, 2022

- HOLIDAY BREAKS AT THANKSGIVING, WINTER, SPRING AND RECOGNIZED FEDERAL/STATE HOLIDAYS

- PUENTE WILL OFFER 180 DAYS OF INSTRUCTION

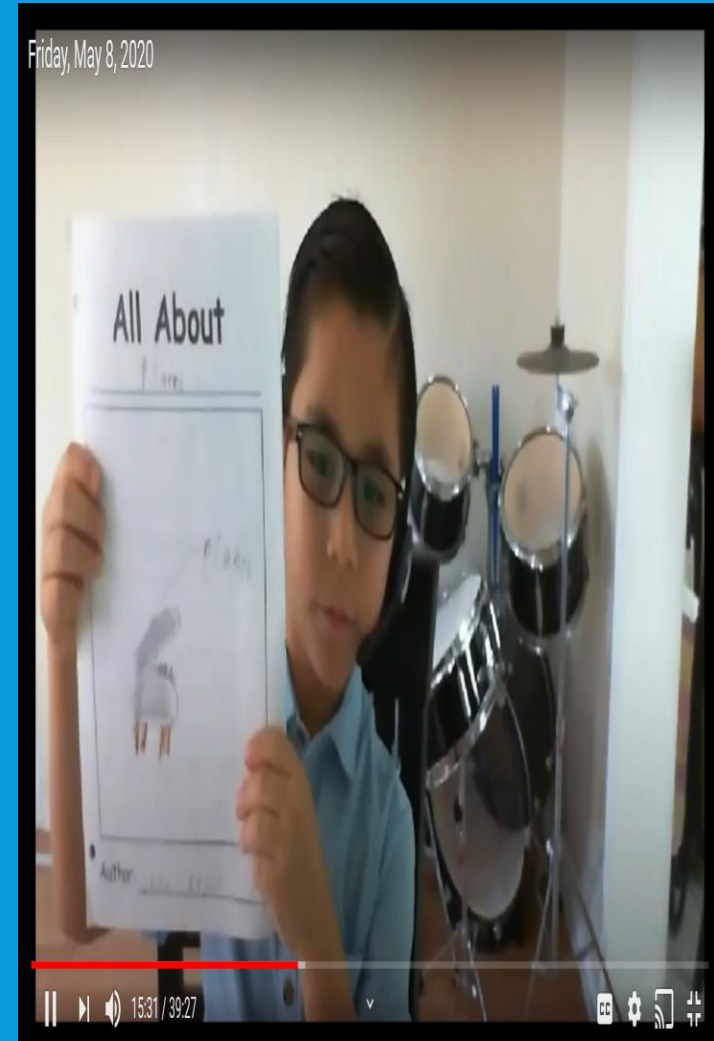
**BOARD ACTION: APPROVE THE 2021-20212 PUENTE CHARTER SCHOOL INSTRUCTIONAL CALENDAR**



## Local Control Funding Formula Guide

Designates state funds to be used for  
“State Priorities” for school operations.

- Student Achievement
- Student Engagement
- Parental Involvement
- Implementation of Common Core
- School Climate (School Culture & Client Satisfaction)
- Basic Services (including facilities in good repair and access to standards-aligned instructional materials)

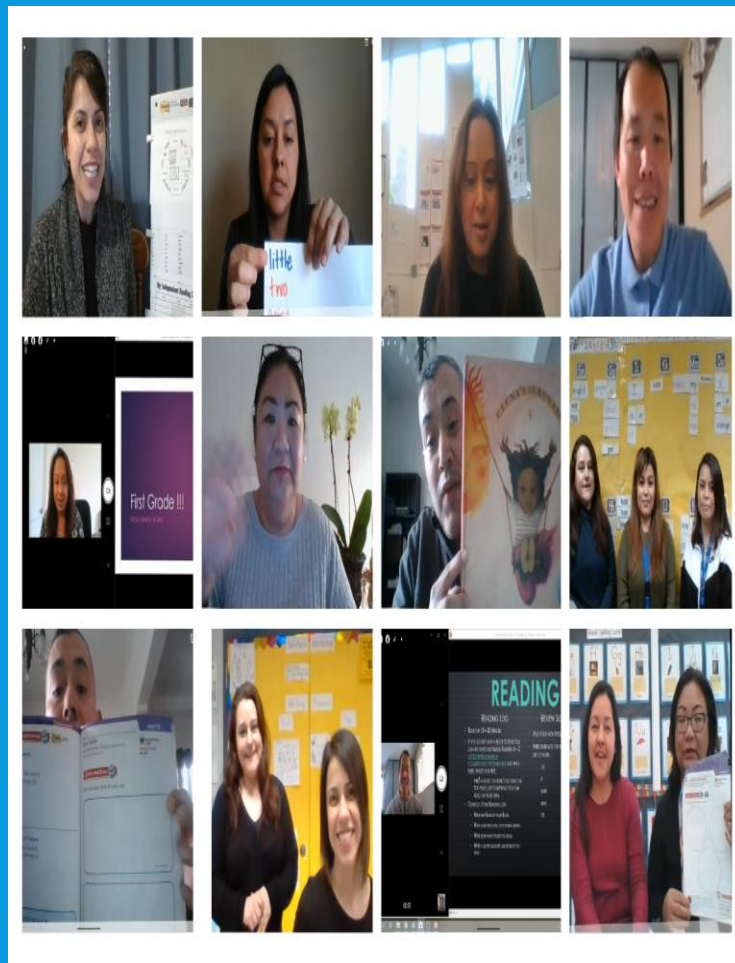




## Priorities for 2021-2022 School Year

### Instructional Priorities – Data Informed Practice:

- Ensure school spaces are compliant
- Assess students with the standardized testing tools
- ELPAC – English Language Proficiency Assessments for California to establish English language proficiency level and our Reclassification rate for 20-21
- NWEA-MAP for grade-level mastery (below; near; met or exceeds)
- Re-establish the school “safe-place” designation and support social-emotional development
- Provide intensity of support for occurrences of learning loss
- Partner with families to meet the needs of each student



## Local Control Accountability for Budget Expenditures

Local Control Funding Formula (LCFF), the supplemental and concentration grants, and the additional state, local and federal funds of \$3.135 million will support the following FY22 data goals:

- ✓ Maintain a 95% daily attendance average
- ✓ Maintain and/or exceed reclassification rate of 34%
- ✓ Maintain and/or exceed the Common Core English Language Arts & Mathematics mastery rate from 18-19
- ✓ Offer weekly Friday professional development sessions to instructional team in support of deepening PUEENTE's student progress monitoring school operations
- ✓ Strengthen social-emotional learning supports
- ✓ Maintain designated service to the special education students
- ✓ Maintain meal program service
- ✓ Maintain after school program service
- ✓ Provide Gifted & Talented Education (GATE)
- ✓ Build on parent involvement to the school community







## Education Protection Account (EPA) For Approval

1) Designates state funds received from the passage of Proposition 30, approximately 17% of the FY22 revenue (\$434,000) for the purpose of teacher salaries to ensure student outcomes of reclassification and Common Core mastery

**Board Action: Approve the use of the EPA funds for teacher salaries for the purpose of improving academic achievement and provide the assurance that we will adhere to the legal requirements for the use of the funds**



### **EPA – EDUCATION PROTECTION ACCOUNT**

About the **Education Protection Account:**

With the November 2012 passage of Proposition 30, which temporarily increases the personal income tax rates for upper-income taxpayers and the sales tax rate for all taxpayers, the state officially established the Education Protection Account (EPA). Revenue generated from the increased taxes are deposited into the EPA and distributed to districts and charter schools on a quarterly basis.

While funds from the EPA are part of a district's or charter school's general purpose funding, Proposition 30 specifies that EPA funds may not be used for salaries or benefits of administrators or any other administrative costs.

From an accounting perspective, EPA revenue and expenditures must be coded separately (under a new resource code, 1400, created specifically for EPA funds) and from an operational perspective, governing boards must determine the use of EPA funds at an open public meeting. This determination must occur annually.

In FY 2021-22, EPA funds are estimated to be 17% of a school's total Local Control Funding Formula (LCFF) base rate. For PUENTE Charter School, this equates to \$433,863. The spending plan for PUENTE Charter School allocates these funds to support teacher salaries and benefits.



## Parent Handbook For Approval

The PUENTE Parent Handbook is an **important** resource for school communication on policies and procedures and serves as as an ongoing reference.

**BOARD ACTION: APPROVE THE  
PUENTE CHARTER SCHOOL PARENT  
HANDBOOK FOR 2021-2022**





Classroom Textbook , Digital &  
Assessment Resources  
For Approval

-TEXTBOOK, DIGITAL & ASSESSMENT  
RESOURCES FOR INSTRUCTION FOR 2021-2022  
WILL BE COMMON CORE STATE STANDARDS-  
ALIGNED (CCSS)

- ASSESSMENTS INCLUDE NWEA MAP; SBAC;  
ELPAC; BENCHMARKS AND PERFORMANCE  
TASKS

**BOARD ACTION: APPROVE THE  
COMMON CORE STATE STANDARDS-  
ALIGNED TEXTBOOK, DIGITAL &  
ASSESSMENT RESOURCES FOR  
INSTRUCTION**







Special Education Contract  
For Approval



Comp Therapy  
Puente Charter  
2021-2022 School Year

## Comp Therapy

### ASSESSMENT, CONSULTATION, SERVICES, STAFFING AGREEMENT

This Services and Consulting Agreement (this "Agreement") is entered into effect as of July 1<sup>st</sup>, 2021 by and between Comprehensive Therapy Associates, Inc. ("Comp Therapy") 111 N. Jackson St. Suite 202 Glendale, CA 91206 and PUENTE Charter ("Client") located at 501 S Boyle Ave, Los Angeles, CA 90033 ("service location").



## Special Education Contracts For Approval

**PUENTE SERVES APPROXIMATELY 5 – 10% SPECIAL EDUCATION STUDENTS EVERY ACADEMIC YEAR**

**- CONTRACT SERVICES PROVIDE THE NEEDED SUPPORT INCLUDING SPEECH AND LANGUAGE AND RESOURCE SPECIALIST PROGRAM**

**- PUENTE HOLDS A CONTRACT WITH COMPREHENSIVE THERAPY ASSOCIATES (CTA), WHICH ARE FEE FOR SERVICES CONTRACTS**

**BOARD ACTION: APPROVE THE RENEWAL OF THE CTA CONTRACT FOR THE 2021-2022 ACADEMIC YEAR**





## Food Service Management Company Renewal for 2021-2022 For Approval

- 1) PUENTE Meal Program provider for four years –
- 2) Adheres to meal requirements as per the U.S. Dept. of Agriculture
- 3) Food Service is compliant with the *Code of Federal Regulations for Meals*
- 4) Quality food products
- 5) Responsive and reliable service
- 6) Overall student and parent satisfaction
- 7) Adhere to safety protocols

**Board Action: : Approve the extension of the school food service contract with School Nutrition Plus for the 2021-2022 academic year.**

### CONTRACT AMENDMENT

<input checked="" type="checkbox"/> CHECK HERE IF ADDITIONAL PAGES ARE ATTACHED	5 Pages	Renewal (Extension Number)	Agreement Number (Base year)
		4	201601
		Amendment	
		4	

1. This Agreement is entered into between the School Food Authority and Contractor named below:  
SCHOOL FOOD AUTHORITY'S NAME  
**PUENTE Learning Center**  
FOOD SERVICE MANAGEMENT COMPANY'S NAME  
**School Nutrition Plus, Inc.**
2. This amendment is effective **July 1, 2021** and amends our original contract. The amendment remains in effect until termination of current contract.
3. The parties mutually agree to this amendment as follows. All actions noted below are by this reference made a part of the Agreement and incorporated herein:

**NOTE:** The following terms have been amended to reflect current federal regulation.

The following prices are in place for the new term, July 1, 2021-June 30, 2022 per the CPI increase of 3.0% for foods consumed away from home.

Breakfast: \$2.08

Lunch: \$3.41

Snack: \$.94



After School Provider Think Together  
Renewal for 2021-2022  
For Approval

- 1) PUENTE After School provider for three years –
- 2) Offers extended school services until 6 pm, Monday through Friday
- 3) Provides on-site coordinator and classroom instructors
- 4) Favorable feedback from student and parent community

**Board Action: : Approve the renewal of the contract of After School provider Think Together for the 2021-2022 academic year.**

**GRANT PROGRAM SERVICES AGREEMENT BETWEEN PUENTE LEARNING CENTER AND THINK TOGETHER, INC.**

**I. PARTIES AND EFFECTIVE DATE**

This Agreement ("Agreement") is made on \_\_\_\_\_, 2021 (the "Effective Date"), between Puente Learning Center (the "District"), and Think Together, Inc., a California non-profit corporation ("CONTRACTOR"), for the purpose of providing After School Educational and Safety ("ASES") Grant Program Services.

**II. LOCATIONS AND TERM**

The District is contracting with CONTRACTOR for provision of comprehensive Expanded Learning Programming, as defined herein, at Puente Learning Center (the "School Site") for the ASES programs. The term of this contract is July 1, 2021 to June 30, 2024 (the "Term"), coterminous with and subject to the District's receipt of ASES grant award, and is subject to all provisions of the primary ASES Grant cited above as well as any subsequent contract modifications or additional requirements by the California Department of Education ("CDE"). If this Agreement differs from the primary CDE ASES Grant, then this Agreement governs the understanding between the District and CONTRACTOR.





## UPDATE ON 4<sup>TH</sup> RENEWAL FOR PUENTE CHARTER SCHOOL

All LAUSD charter schools that would renew their petitions in 2021 & 2022 are receiving two-year extensions to their current petitions due to COVID-19 impact on outcomes data.

PUENTE's current petition will extend through June 30, 2024.







- HYBRID SUMMER SCHOOL OPERATES  
JULY 6 – JULY 30  
- ACADEMIC YEAR BEGINS ON  
AUGUST 16

